



Yana Garcia
Secretary for
Environmental Protection



Department of Toxic Substances Control

Meredith Williams, Ph.D., Director
1001 "I" Street
P.O. Box 806
Sacramento, California 95812-0806



Gavin Newsom
Governor

This example was created by DTSC to be used as a guide to assist the regulated community with compliance. It does not substitute for or replace any regulatory requirements.

An updated contingency plan and quick reference guide is required to be resubmitted when amended.

Please note that treatment, storage, and disposal facilities (TSDF) and interim status facilities are not subject to quick reference guide requirements.

Contingency Plan Quick Reference Guide

FACILITY NAME

ABC FACILITY

FACILITY STREET ADDRESS

1000 SW Main

CITY, STATE, ZIP

Street Anytown,
CA 90000

Include the name and physical address, city, state, and zip code of the facility.

Facility Contacts (First Name, Last Name, 24/7 Emergency Number):

Primary Emergency Coordinator and phone number:

FIRST NAME LAST NAME EMERGENCY NUMBER (24/7)

Secondary Emergency Coordinator and phone number:

FIRST NAME LAST NAME EMERGENCY NUMBER (24/7)

Tertiary Emergency Coordinator and phone number:

FIRST NAME LAST NAME EMERGENCY NUMBER (24/7)

Include the first and last name as well as a mobile number where each emergency coordinator can be reached 24/7.

Note: ABC Facility operates three shifts, 24/7, but the order of contact during an emergency is listed above.

Hazardous Waste Information:



Name of Waste (in layman's terms) ¹	Waste Codes/Hazards ²	Location Accumulated ³	Map Symbol ⁴	Maximum Amounts Present ⁵	Response Notes ⁶	Special Notes to Hospital/Treatment Personnel ⁷
Ex: Expired, unusable pharmaceuticals (warfarin, Nitroglycerine)	P081, P001, toxic	Pharmacy, Satellite Accumulation Area		5 gallons	Wear skin protection. Do not ingest.	Contact poison control if ingested
Ex: Misc lab chemicals (solids and liquids)	F002, F003, F005, D001, D002, May be toxic, corrosive, flammable or mixtures thereof	Satellite Accumulation Areas	*	55 gallons	Wear eye and skin protection at all times. See onsite personnel for building by building summary.	See onsite personnel for building by building summary.
Ex: Wastewater sludge with metals (solid)	F006, toxic	Behind building, next to treatment unit. 20 yard bin.		20 cubic yards	Keep covered to minimize dust spreading. Wear eye and skin protection at all times.	None
Ex: Wastewater awaiting treatment	D007, D008, toxic	Hold tank #3	&	300 gallons	Wear eye and skin protection. Do not ingest.	None

Table Footnotes

¹Name of Waste: Types/names of hazardous wastes in layman's terms.

²Waste Code/Hazards: Associated hazard associated with each hazardous waste present at any one time (e.g., toxic wastes, spent ignitable solvent, corrosive acid). So long as the hazard does not change, using the term "mixed solvent" is an acceptable name for a 30-70 mix as well as a 60-40 mix.

³Location Accumulated: Where in the facility the hazardous waste is stored or accumulated.

⁴Map Symbol: Symbol on the facility map denoting where the hazardous wastes are stored.

⁵Maximum Amounts Present: Estimated maximum amount of each hazardous waste that may be present at any one time.

⁶Response Notes: The identification of any precautions staff should take when handling or coming into contact with the hazardous waste. Include any other information on whether the full contingency plan calls for staff to take any special precautions during an emergency (e.g., if a SCBA is required, strong skin sensitizers, etc.).

⁷Special Notes to Hospital/Treatment Personnel: The identification of any hazardous wastes where exposure would require unique or special treatment by medical or hospital staff. This ensures that first responders and other medical staff are prepared to manage an incident requiring an unconventional response effectively and safely. This can include special instructions that would need to go with staff if the exposed staff person leaves the site (e.g., "apply calcium gluconate liberally to exposed area" if they were exposed to hydrofluoric acid waste).

For additional information, refer to the EPA's FAQs on large quantity generators quick reference guides: [EPA FAQ](#).

MAP ATTACHMENTS

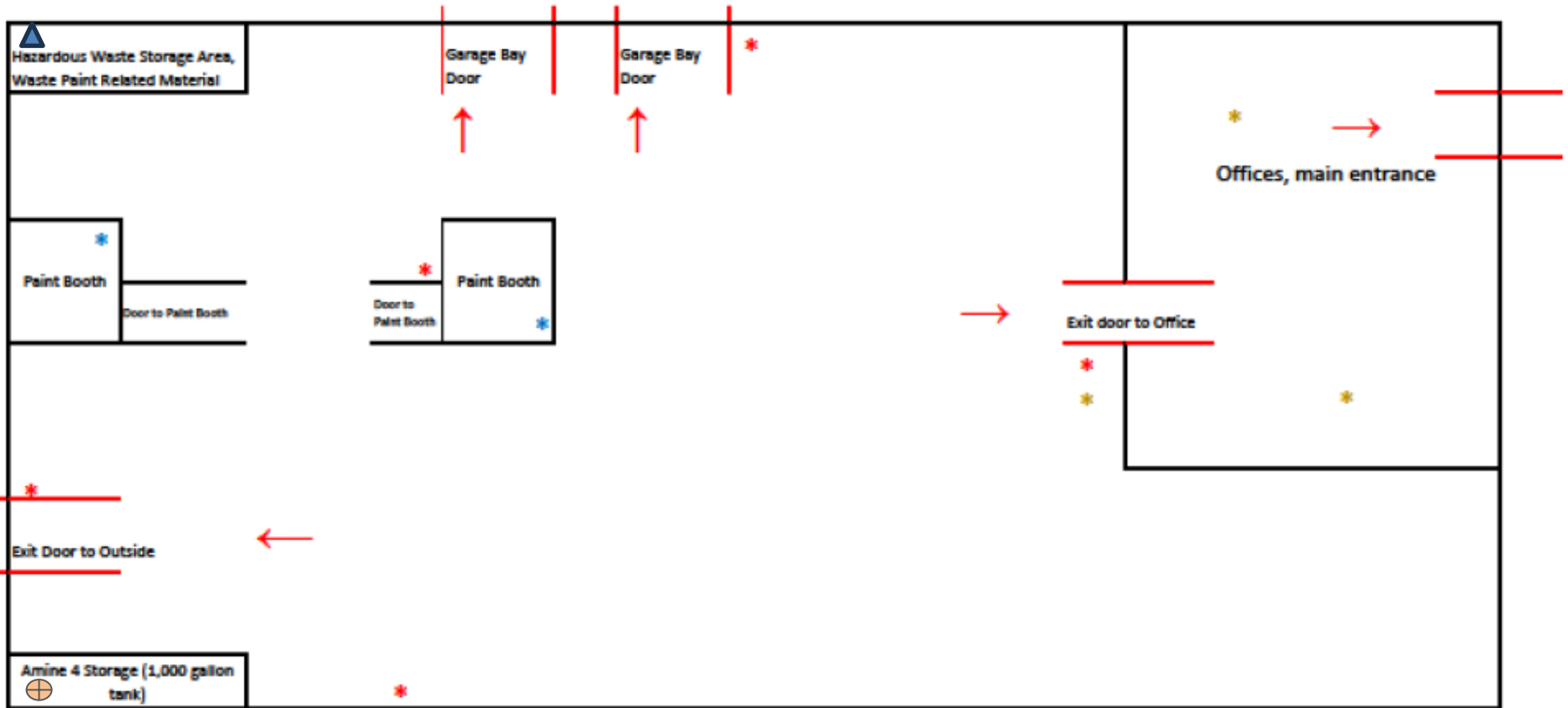
For examples of maps required, please see below on the following pages.

1. Include a map of the facility with the following marked:

- a. where hazardous wastes are generated, accumulated, and treated, and routes for accessing these wastes
- b. the identification of on-site notification systems (e.g., fire alarms that rings off site and smoke alarms)
- c. telephone locations that may be used for offsite notification of an emergency
- d. the evacuation route out of the building marked by red arrows

2. Include a street map of the facility in relation to the surrounding businesses, schools, and residential areas to understand how best to get to the facility and evacuate citizens:

- a. mark the locations of water supply (fire hydrants on the street that are accessible to emergency personnel)
- b. mark the types of buildings surrounding the facility



- * Satellite Accumulation Area for Paint Related Waste Material (D001, F003, F005)
- * Fire Alarms (ring on-site only, there are no fire alarms that notify off-site personnel)
- * Telephone for off-site notification of emergency

→ Indicates evacuation route out of the building.

Note 1: Hazardous waste (paint related waste) is generated and accumulated inside each of the two paint booths, and is accumulated in the hazardous waste storage area. Amine 4 can be a hazardous waste if it is off-specification and it is generated and accumulated in the SW corner at the Amine 4 tank.

Note 2: Smoke detectors are located throughout the office and main warehouse on the ceiling, in a grid about every 25 feet. Smoke detectors are connected to an automatic sprinkler system.

Street Map

